



Nearby

Perfectly positioned opposite Hagley Park and the River Avon, just moments from the city's vibrant precinct, The George is a tranquil retreat only 15 minutes from Christchurch Airport. Located within walking distance of the Botanic Gardens, Canterbury Museum, Christchurch Art Gallery, and Te Pae Convention Centre, it offers effortless access to the city's key attractions. Beyond the city, guests can explore nearby vineyards, scenic coastlines, all within an easy drive.



50 Bistro

Menus change throughout the year to reflect the mood and trends of each season. Spring and summer bring delicate dishes with crisp vinaigrettes and aromatic herbs, while autumn and winter's warming dishes are served with richer jus and sauces to satisfy heartier appetites. 50 Bistro hours: 6.30am until 10pm.



50 Bistro also serves a beautiful high tea, bookings are essential.

The George is Christchurch's luxury boutique hotel, perfectly positioned in the heart of the city overlooking picturesque Hagley Park. Renowned for its personalised service, understated elegance, and attention to detail, The George offers award-winning dining, stylish accommodation, and 5-star amenities. With a genuine commitment to creating memorable guest experiences, every stay is—delightfully yours.

Executive Rooms (8)

Stylish and contemporary, our Executive Rooms at The George offer everything needed for a comfortable stay (27 sqm). Featuring either a king bed or two twin single beds, these rooms accommodate up to two adults. The ensuite is designed for both comfort and convenience, featuring a spacious tiled walk-in shower. Additionally, four accessible rooms are available in this category, ensuring a welcoming stay for all guests.



Premium Executive Rooms (32)

Located across all floors, with select rooms offering picturesque views of our private gardens, these sophisticated 27 sqm rooms offer the ultimate in comfort and style. With either a plush king bed or two twin single beds, and an option to add a rollaway for an additional guest (charges apply). The elegant ensuite features a spacious tiled walk-in shower. (27 King, 5 Twin).



Junior Suite (4)

Our spacious suites offer enhanced comfort with additional living and bathroom space, full-sized wardrobes, and bespoke custom-made furniture. Featuring a luxurious Californian king bed or two king single beds, these suites also offer the option to add a rollaway for an extra guest (charges apply), accommodating up to three people. The elegant ensuite includes both a separate walk-in shower and a deep soaking bath for ultimate relaxation. (40 sq m).



Park Suite (6)

Take in breathtaking views of Hagley Park and the River Avon from these luxurious 54 sqm suites, designed to make you feel right at home. Choose between a Californian king bed or two king singles, with the option to add a rollaway (additional charge) for up to three guests. The ensuite features a separate double walk-in shower and a spacious spa bath for comfort and relaxation.



The Residence (3)

A beautifully restored heritage homestead nestled within private gardens, offering three stunning bedrooms across three levels. The ground floor features a kitchen, a library, and a private dining room, with direct access to the tranquil gardens. On the first floor, two bedrooms each include a spa bath and separate shower and can be booked individually or combined into a one- or two-bedroom suite by incorporating the interconnecting drawing room. The third bedroom is a studio apartment situated on the top floor and includes a kitchenette. Available as individual rooms or for exclusive use, the homestead blends timeless charm with modern luxury for a uniquely private and elegant experience.



Hotel facilities:

- Complimentary Wi-Fi
- Complimentary parking
- Valet service
- Function spaces
- e-bikes available for hire
- On-site gym
- Lobby bar
- Award winning dining
- 24 hour reception
- 24 hour room service
- Concierge service
- Guest laundry

In-room facilities:

- Complimentary tea & coffee
- Mini bar
- Sky TV & chromecasting
- Generous toiletries
- Robes
- Hair dryer
- Security safe
- Evening turndown service
- Heated mirrors
- Underfloor heating
- Airconditioning
- PressReader
- Wireless high speed internet





Events at The George

The George is an elegant boutique urban hotel located opposite Hagley Park and the River Avon, on the verge of the Christchurch CBD. The George offers a variety of spaces and venues to suit any event, from private boardroom meetings to more lavish affairs. Every event is delivered in an environment of seamless elegance, matched with award-winning cuisine and professional service.

Accommodation

The various room types offer a selection of twin double beds, king beds, and Californian king beds (some of which can be converted to twin single beds).

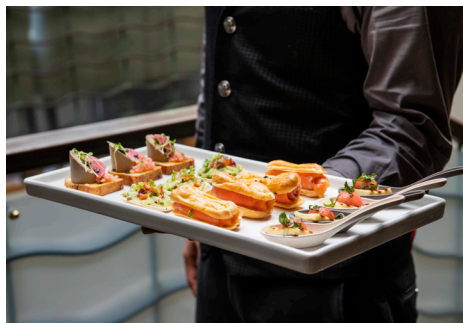
| | |
|----------------------------|----|
| Total number of rooms | 53 |
| Executive rooms | 4 |
| Executive Accessible rooms | 4 |
| Premium Executive rooms | 27 |
| Premium Executive Twin | 5 |
| Residence rooms | 3 |
| Junior Suites | 4 |
| Park Suites | 6 |

Outdoors

A private tree lined garden is available for alfresco events. There are also opportunities for team-building and outdoor pursuits such as golf and orienteering in Hagley Park, boules on the private lawns, or canoeing on the River Avon.

Equipment

Each room offers internet and multi-media facilities and can be themed to suit any occasion. Another bonus at The George is the complimentary car parking facility allowing easy access for all guests.



Catering

Superb catering is a hallmark of The George's conferencing facility which maintains the same high standards set in 50 Bistro curating bespoke menus for conferences and meetings.

Our conference and banqueting facilities cater for groups of 8 – 150 people. Whatever the type of the event, our team will design an event to suit your needs, so it makes perfect sense to hold your special event at The George, Christchurch. The hotel's six separate venues can be used for a vast array of events including cocktail parties, meetings, private dinners, presentations, seminars, conferences, wedding receptions and product launches.

Parkview

The largest of our conference rooms situated on the third floor features superb views of Hagley Park and the River Avon. With windows on two sides, this room provides ample natural lighting while blackout curtains can be utilised for presentations. Additionally, a concealed dividing wall transforms Parkview into two separate rooms, Parkview 1 & 2.



The Treasury

Situated on the second floor with access via stairs or lift, The Treasury is a versatile room with windows along one wall. It is suitable for intimate to medium conferences, seminars, dinners, board meetings and product launches.



Annex

A flexible internal room, ideal as a breakout space or for smaller meetings, seminars, and collaborative sessions.



The Boardroom

Situated on the second floor, The Boardroom provides an intimate setting perfect for smaller meetings, private lunches and dinners.



The Residence

A gracefully restored homestead creates a unique facility with interconnecting lounge/coffee area and meeting room - offering the flexibility of a day time boardroom space, an evening cocktail venue, or a private dinner venue. A truly exclusive venue, adjoined to The George by an enclosed walkway.



Guest Facilities

- Complimentary Wi-Fi
- Complimentary off street carparking
- 1 on-site restaurant
- 1 lounge bar

Conference Facilities - Room Capacity

| venue area | (sq.m) | u shape | boardroom | theatre | classroom | dining | cocktail |
|------------|--------|---------|-----------|---------|-----------|--------|----------|
| Parkview | 109 | 36 | 30 | 100 | 51 | 81 | 150* |
| Parkview 1 | 52 | 21 | 18 | 40 | 24 | 36 | 40 |
| Parkview 2 | 57 | 21 | 18 | 50 | 27 | 40 | 50 |
| Treasury | 55 | 28 | 24 | 50 | 27 | 36 | 50 |
| Boardroom | 32 | N/A | 12 | N/A | N/A | 14 | N/A |
| Annex | 42 | 15 | 14 | 40 | 24 | 24 | N/A |
| Residence | N/A | N/A | 15 | N/A | N/A | 18 | 30** |
| Pescatore | 80 | 24 | 20 | 50 | 27 | 40 | 60 |

*If utilising entire third floor, maximum number of guests for cocktail style event in Parkview is 180 guests

**If including outside garden area, maximum number of guests is 150

For more information or to start planning your next event at The George, please contact;

Conference Co-ordinator
Phone: +64 3 371 0255
Fax: +64 3 371 0259
Email: conferences@thegeorge.com

